



# Builder



## The Next Generation Custom Development Tool



The Excellence in E-Learning Awards recognizes outstanding examples of e-Learning throughout the industry

### Develop e-Learning

IHS Builder is a development tool that enables your company to create custom application-based eLearning content, seamlessly in a fraction of the time and cost of conventional development tools.

### Capture Best Practices

IHS Builder provides a robust way to capture and record your subject matter experts' (SMEs) best practices automatically as they execute your business processes and application procedures.

### Automate Manual Processes

IHS Builder is a powerful tool for eliminating redundant data entry, reducing human error, and increasing overall productivity without complex back-end programming. IHS Builder actually captures and automatically records the critical business processes of your best workers, allowing your company to build a knowledge base by transferring these best practices to employees, partners, and customers.

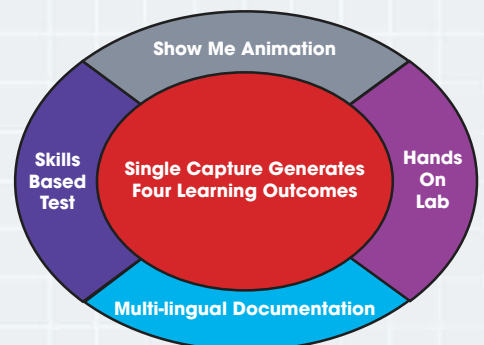
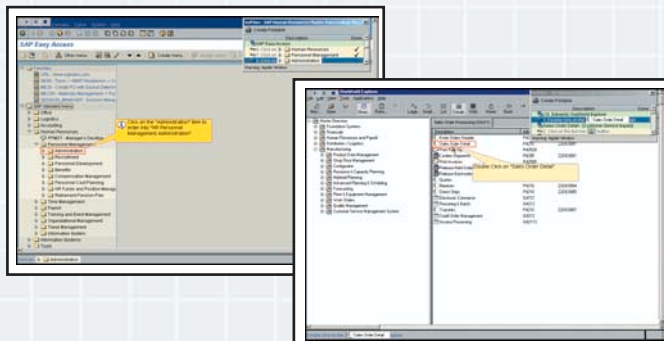
### Improve Productivity

IHS Builder streamlines the integration and usage of the eLearning deployment cycle, thereby significantly increasing productivity, and accelerating deployment and evolution of new processes in your company. Most importantly, it slashes your eLearning costs while putting ownership of the content in the right hands - your training managers and subject matter experts.

- **Rapidly create interactive eLearning courses**
- **Accurately document company processes**
- **Capture and automate your employees' knowledge for transfer and replication across your company**

- **Standardize and centralize your eLearning interface**
- **Automatically produce user manuals and documentation**
- **Integrate multiple learning projects into a single learning event**
- **Quickly train your employees on mission critical software**

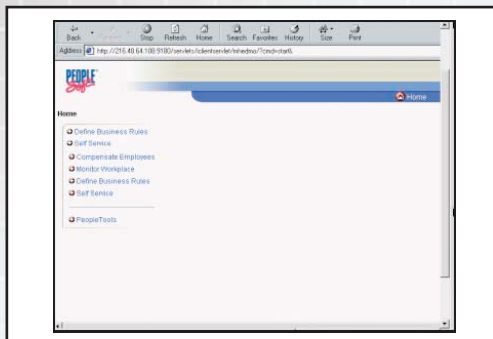
- **Maximize your training budget**
- **Accelerate launch dates**
- **Synchronize eLearning with new software releases**



**Save 80% over the time it normally takes to create eLearning programs**

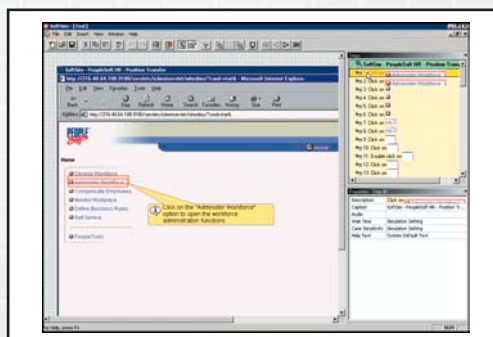
## 1. Capture

By simply using one of your company's business applications, IHS Builder renders all end-user interactions associated with that application, including screens, dialogs, system outcomes and user interface controls, and saves them into an industry standard XML (eXtensible Markup Language) format.



## 2. Integrate

Using the IHS Builder Visual Project Editor, authors can integrate learning modules from different sources and link them together using common logic flows and rules-based outcomes. For example, a manager can teach the sales force how to sell a new product by building a series of learning modules on the various features of a product, linking them into an integrated eLearning course using the IHS Builder integration tool.



## 3. Deploy

After capturing the process, IHS Builder generates four unique learning outcomes including:

### Show Me Animations

Teaches by interactively walking the end-user through the correct business processes.

### Hands-On Lab

Allows the end-user to learn by interactively duplicating the correct business process.

### Skills-Based Test

Tests the end-user through a complete evaluation sequence of the business process.

### Documentation

Automatically generates written documentation as a learning aid for the end-user.

